

pfmmedical
Quality and Experience

TiMESH Hernia Mesh

- Titanium-polypropylene composite mesh
- Unsurpassed clinically proven biocompatibility
- Hydrophilic surface for hands-free manipulation

www.pfmmedicalusa.com

15 Years
Titanized
Meshes

Compatible with all open & laparoscopy techniques including intraperitoneal procedures[†]

Summary

At pfmmmedical, we understand achieving a positive biocompatible response of an implanted hernia mesh is the goal for you and your patient. The covalently bonded titanium surface of TiMESH hernia mesh creates a unique hydrophilic interface on the base of macroporous polypropylene. Numerous clinical studies have demonstrated smooth parietal in-growth and minimal shrinkage with low recurrence rates. This surface modification allows for minimal manipulation without folding or migrating while evenly adhering to the abdominal ceiling during the placement procedure.

Benefits

▶ Proven Biocompatibility

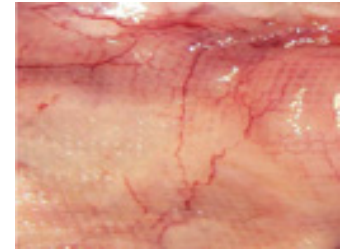
- Viable tissue in-growth & integration
- Less fibrous encapsulation & contraction
- Less inflammatory response and foreign body sensation

▶ Proven Confidence

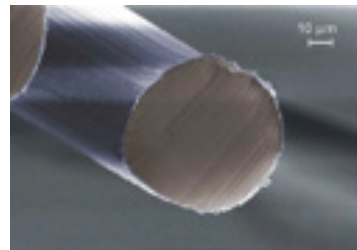
- High strength-to-weight ratios exceed maximum intra-abdominal pressure
- Hands-free manipulation
- Fixation-free capability

▶ Proven Satisfaction

- Low post-surgical recurrence rates
- Reduced post-operative pain
- Shorter convalescence



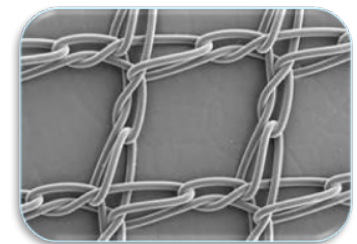
Intraperitoneal surface
twelve weeks post-operative



360-degree covalently
bonded titanium surface

Ordering Information

Weight (Density)	REF	Size	Qty / box
Extra Light (16 g/m ²) [†]	6000137	4" x 6" (10 cm x 15 cm)	3
	6000311	6" x 6" (15 cm x 15 cm)	3
	6000248	6" x 8" (15 cm x 20 cm)	3
Light (35 g/m ²)	6000138	4" x 6" (10 cm x 15 cm)	3
	6000312	6" x 6" (15 cm x 15 cm)	3
	6000140	6" x 8" (15 cm x 20 cm)	3
	6000139	12" x 12" (30 cm x 30 cm)	1
Strong (65 g/m ²)	6000470	4" x 6" (10 cm x 15 cm)	3
	6000471	6" x 6" (15 cm x 15 cm)	3
	6000423	6" x 8" (15 cm x 20 cm)	3
	6000424	12" x 12" (30 cm x 30 cm)	1



Same 1mm² macroporous design
in three different weight densities

[†]Bittner et al. Guidelines for laparoscopic treatment of ventral and incisional abdominal wall hernias (International Endohernia Society Part III. 2013. Surg Endosc. Open Access. [‡]Not qualified for use in IPOM procedures

Indications for Use

The TiMESH is intended for the reinforcement of tissue during surgical repair. Specifically, the TiMESH is indicated for laparoscopic and open surgery for the repair of direct inguinal hernias, indirect inguinal hernias, femoral hernias, umbilical hernias, incisional hernias, parietal reinforcement of tissues and abdominal wall repair.

www.pfmmmedicalusa.com

pfmmedical

PFM Medical, Inc.
1916 Palomar Oaks Way, Ste. 150 • Carlsbad, CA 92008
Ph: 760.758.8749 • Fax: 760.758.1167
customerservice@pfmmmedicalusa.com • www.pfmmmedicalusa.com

pfmmmedical and the PFM logo are registered trademarks of PFM Medical, Inc. © 2020 PFM Medical, Inc.