

Hands-free retraction
you need with the
protection you want

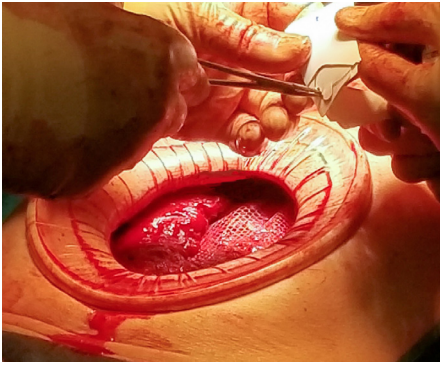
ASEPT[®]

Wound Protector/Retractor

Suggested Uses

- Abdominal and General Surgery (Biliary, Inguinal Hernia Repair, Thyroidectomy, Appendectomy, Pancreatectomy, Splenectomy)
- Bariatric (Laparoscopic and Open Bypass)
- Rectal (Laparoscopic and Open Surgery)
- OB/Gyn





Summary

When SSI management is critical to your success, the ASEPT Wound Protector/ Retractor isolates the superficial incision from the deep surgical site to maximize the protection of the field from infection while providing hands-free exposure for a vast array of surgical procedures in a single, sterile device.

The connecting sheath between the two rings supports the Surgical Infection Society guideline 2.8 of “Use of an impervious plastic wound protector may prevent SSI in open abdominal surgery.”¹

Benefits



▶ Proximal ring's horizontal rib design

- Easily flips and rolls to taut excess sheath length
- Sustains maximum wound opening view

▶ Barrier sheath protection

- Provides even pressure to the wound
- Lowers incision site surfaces exposure to contamination
- Assists in moisture retention of the incision surfaces

▶ Single, sterile disposable device

- Minimizes procedural setup time
- May reduce costs and infections risks associated to multiples of metal retractors

Ordering Information (Box of 5)

REF	Description	Incision Size	Ring Diameter	Sheath Length
SA0510XS	XS	2 - 4 cm	5 cm (2.1")	10 cm (3.7")
SA0814SM	S	2.5 - 6 cm	8 cm (3.0")	14 cm (5.4")
SA1116MD	M	5 - 9 cm	11 cm (4.3")	16 cm (6.2")
SA1720LG	L	9 - 14 cm	17 cm (6.7")	20 cm (8.0")
SA2133XL	XL	11 - 17 cm	21 cm (8.3")	33 cm (13.0")

¹ Ban et al. Executive Summary of the American College of Surgeons/Surgical Infection Society Surgical Site Infection Guidelines-2016 Update. 2017. Surgical Infections. Vol 18(4).

Indications for Use

The ASEPT Wound Protector/Retractor is indicated for use in retracting and protecting an incision during laparoscopic or open surgery. The atraumatically retracted wound provides maximum access with minimum incision size. Further, once positioned, the ASEPT Wound Protector/Retractor protects against wound contamination.

www.pfmmedicalusa.com

pfmmedical

pfm medical, inc.
1916 Palomar Oaks Way, Ste. 150 • Carlsbad, CA 92008
Ph: 760.758.8749 • Fax: 760.758.1167
customerservice@pfmmedicalusa.com • www.pfmmedicalusa.com

PFM Medical, the PFM logo and ASEPT are trademarks and/or registered trademarks of pfm medical, inc. © 2019 PFM. All rights reserved.